

# SETUP INSTRUCTIONS

for Models 222S, 222D with BSS-Box

Bulk Seed Systems  
20561 Justice Ave.  
Wabasso, MN 56293

BY BULK SEED SYSTEMS, INC.

Please read through all instructions before mounting stands to trailer.

**DO NOT BOLT TO TRAILER UNTIL ALL STEPS ARE FOLLOWED.**

**Step 1:** Place the rolling bracket on the ground next to the trailer. Place 3/8" x 1 1/2" long (grade 8) bolts into hole in rolling bracket at the end of the angle iron. Place 3/8" nut on bolt before screwing bolt into airlock mounting hole. Screw bolts into airlock until end of bolt is flush with the inside of airlock (*Photo 1*). Tighten nuts against the airlock (*Photo 2*).



Photo 1



Photo 2



Photo 3

**Step 2:** Place all stands on trailer so that outside edge of front rail is straight above the outside edge of the trailer. DO NOT BOLT DOWN AT THIS TIME. You will have to adjust later.

**Step 3:** Place rolling bracket onto rail on the front of the frame. Roll to the middle of the frame, just between both of the chutes.

**Step 4:** Place BSS-box onto top of airlock (*Photo 3*). Push 1/4" x 1" long bolt thru hole in rolling bracket and thru the hole in BSS-box (*Photo 4*) (May have to press down firmly against new foam seal on airlock). Place 1/4" nut on bolt and tighten. (1/4" wing nuts are provided with vacuum attachment) (*Photo 5*).

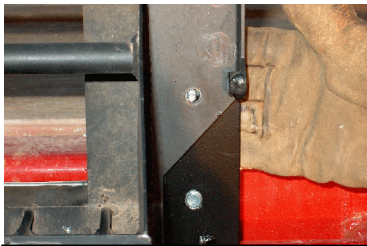


Photo 4

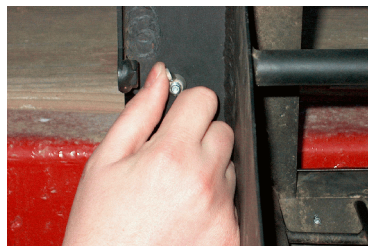


Photo 5



Photo 6

**Step 5:** Swing all seed chutes up into place and make sure that each lock down bracket falls behind brace on chute. Measure from the top of each seed chute down to the frame where boxes set on. Adjust each chute so measurement is approximately 5 3/4". Roll

# SETUP INSTRUCTIONS

for Models 222S, 222D with BSS-Box

Bulk Seed Systems  
20561 Justice Ave.  
Wabasso, MN 56293

BY BULK SEED SYSTEMS, INC.

the rolling bracket over one of the seed chutes (*Photo 6*). If seed chute is too low, (or high) adjust cam linkage on front hinge brackets until chute fits into hopper.

**Step 6:** Now turn ½" bolts against the trailer to help support the rolling bracket (photo 7). Adjust so that chute is sticking inside of box about ½" to ¾". Tighten ½" jam nuts against rolling bracket.

**Step 7:** Roll the airlock in front of the next seed chute. Adjust this end of the stand in or out on the trailer so that chute sticks inside of box about ½" to ¾". This will provide enough over-lap so there will not be any grain leakage.

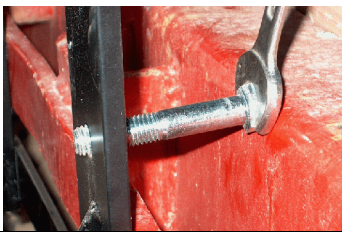


Photo 7

**Step 8:** Bolt down frame by drilling thru the bed of the trailer. One hole for each leg. (Eight 7/16" bolts used for a double frame, Four 7/16" bolts used for a single frame)

**Step 9:** ONLY FOR MOUNTING ADDITIONAL STANDS. Follow STEP 7, and STEP 8 for each additional stand placed on the trailer. (Front rail may need to be aligned with hammer to allow air lock to be rolled from one frame to the next)

**Step 10:** After all stands are bolted to trailer, place two 1/4" x 1" bolts into holes at the far ends of the front rail so that rolling bracket can't roll off of either end.

\*\*\* Top of seed chutes are designed with one side 1" shorter than the other 3 sides. This allows for the clearance that is needed for the slide gate on the bulk box to open. All frames are shipped with chutes already positioned so that boxes need to be loaded with slide gates towards one another. HINT: chutes can be exchanged with one another to reverse the slide gate direction

\*\*\* The bulk box slide gate should be shut and chute empty before road travel begins.

\*\*\* If stands are removed from trailer, keep track of each frame and where it is located. Hole pattern on one frame may not line up with a different frame.

\*\*\* FOR STORAGE STACK ONE STAND ON TOP OF THE OTHER, USING STORAGE BRACKETS UNDER THE FRONT LEGS OF EACH STAND THAT IS PLACED ON TOP OF ANOTHER. WHEN USED CORRECTLY THE BRACKETS WILL PREVENT STANDS FROM SHIFTING AND FALLING, WHICH COULD CAUSE INJURY OR DEATH.

Contact us for more information!

Phone: 507-342-2222 Fax: 507-342-2223

Website: [www.bulkseedsystems.com](http://www.bulkseedsystems.com)

Email: [sales@bulkseedsystems.com](mailto:sales@bulkseedsystems.com)